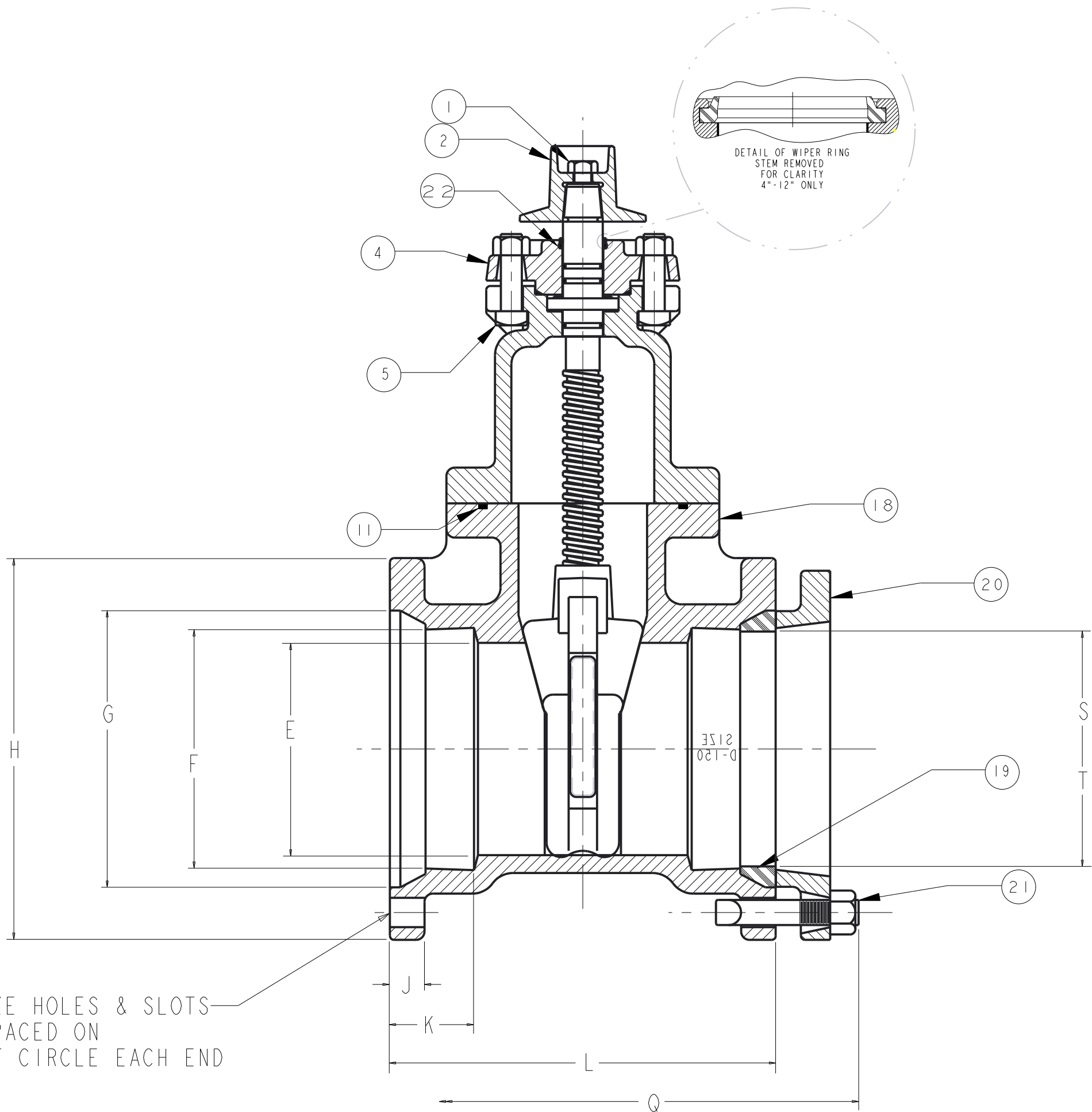
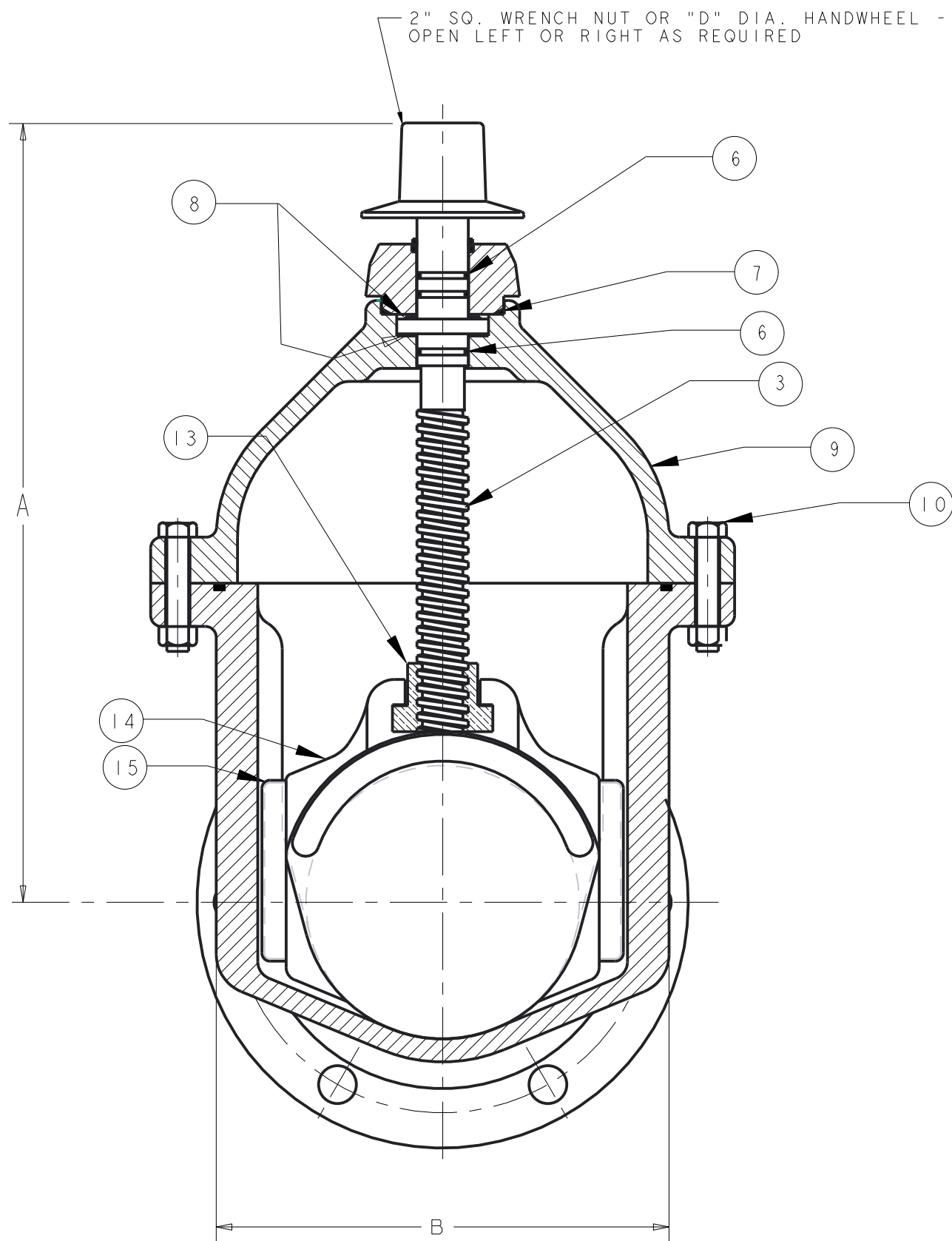
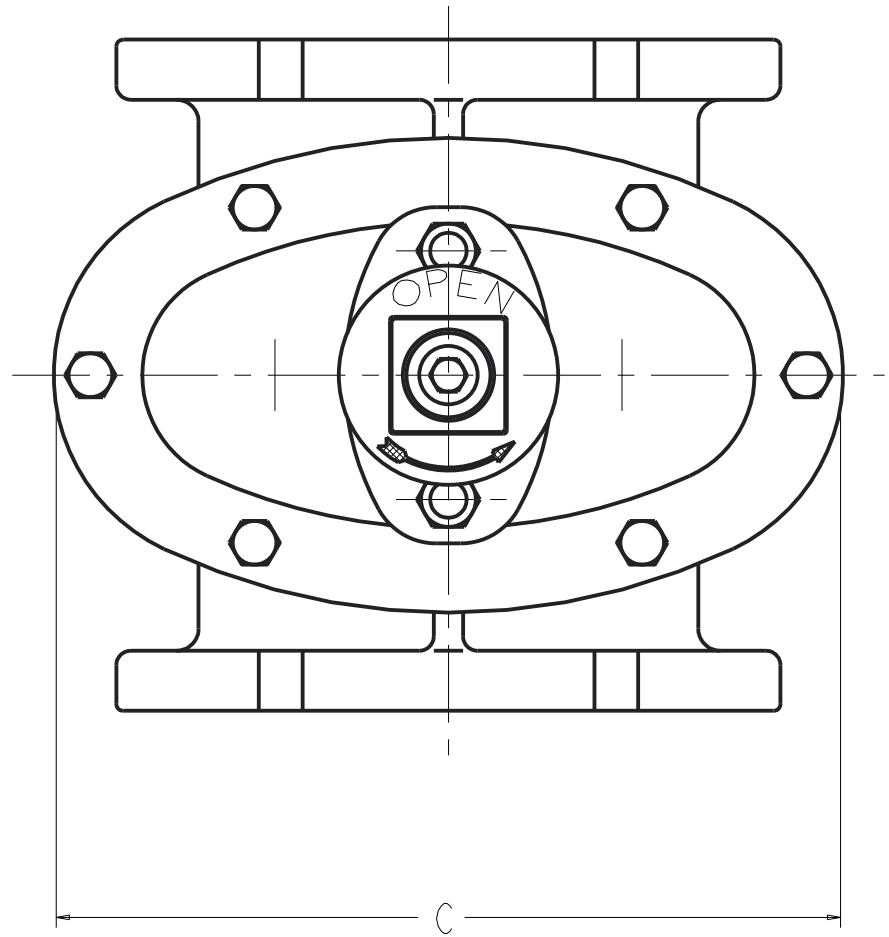


4 IN - 8 IN C-USP2-42 RESILIENT WEDGE CUT-IN VALVE LESS ACCESSORIES
NRS - AWWA - 250W - 500 TEST
UL/FM - 200W - 400 TEST
©CATALOG NO. C-USP2-44 W/DUCK TIPPED GASKETS
©CATALOG NO. C-USP2-45 W/PLAIN END GASKETS



PART LIST					
ITEM	DESCRIPTION	REQ'D	MATERIAL	ASTM	
1	CAP SCREW	1	304 STAINLESS STEEL	A193	GRADE B8
2	WRENCH NUT	1	CAST IRON [SEE NOTE 2] ①	A126	CLASS B
3	STEM	1	BRONZE	B138	ALLOY C67600
4	STUFFING BOX	1	CAST IRON [SEE NOTE 2] ①	A126	CLASS B
5	STUFFING BOX BOLT STUFFING BOX NUT	2	304 STAINLESS STEEL 304 STAINLESS STEEL	A193 F594	GRADE B8 GROUP 1
6	O-RING	3	RUBBER	D2000	R34 ②
7	O-RING	1	RUBBER	D2000	R34 ②
8	ANTI-FRICTION WASHER	2	CELCON		M90 ③
9	BONNET	1	DUCTILE IRON ④	A536	65-45-12
10	BONNET BOLT BONNET NUT	"M"	304 STAINLESS STEEL 304 STAINLESS STEEL	A193 F594	GRADE B8 GROUP 1
11	O-RING	1	RUBBER	D2000	R34 ②
13	DISC NUT	1	BRONZE	B62	ALLOY C83600
14	DISC	1	SEE NOTES 1 & 2 ② ①		
15	GUIDE CAP	2	CELCON		M90 ③
17	HANDWHEEL	1	CAST IRON [SEE NOTE 2] ①	A126	CLASS B
18	BODY	1	DUCTILE IRON ④	A536	65-45-12
19	MECH, JOINT GASKET	2	RUBBER	D2000	R42
20	PIPE GLAND	2	CAST IRON [SEE NOTE 2] ①	A126	CLASS B
21	TEE HEAD BOLT & NUT	"R"	STEEL	A242	TYPE 1
22	WIPER RING	1	RUBBER	D2000	

NOTES:
① RUBBER ENCAPSULATED CAST IRON DISC
CAST IRON - ASTM A126 - CLASS B
RUBBER - SBR - ATM D2000
② 2. MANUFACTURER'S OPTION TO UPGRADE MAT'L
TO DI - A536 GR 65-45-12

③ ITEMS NOS. 19,20 & 21 AND LETTERS "Q" - "T"
PERTAIN TO CATALOG NOS. C-USP2-44 & 45 ONLY

S - DUCK TIPPED GASKET
T - PLAIN END GASKET

N - NO. & SIZE HOLES & SLOTS
EQUALLY SPACED ON
P - DIA. BOLT CIRCLE EACH END

DIMENSIONS FOR RESILIENT WEDGE VALVE - INCHES (this drawing only)

VALVE SIZE	A	B	C	D	E	F	G	H	J	K	L	M	N	P	Q	R	S	② T	TURNS TO OPEN
4	14.19	⑧8.25	⑧10.79	11.00	4.30	⑧5.12	6.27	⑧9.38	⑧0.94	2.50	⑧9.97	4	4	7.75	15.00	8	4.73	4.93	14
6	18.00	10.50	13.50	13.00	6.30	⑧7.22	8.37	⑧11.38	⑧1.03	2.50	11.50	6	6	9.75	16.50	12	6.80	7.00	20.5
8	21.50	⑧13.21	⑧16.36	14.00	8.30	⑧9.42	10.58	⑧13.75	1.12	2.50	⑧12.56	6	6	12.13	18.50	12	8.95	9.16	26.5

ECO 1374961 CUSP WAS A USP. ADDED CUT-IN VALVE. ADDED D2000 RLC 12-06-05	⑧ ECO 1381351 8.25 WAS 8.19 13.21 WAS 13.12 10.79 WAS 10.81 16.36 WAS 16.38 5.12 WAS 5.17 7.22 WAS 7.27	9.42 WAS 9.47 9.38 WAS 9.44 11.38 WAS 11.44 13.75 WAS 13.81 0.94 WAS 1.00 1.03 WAS 1.06 9.97 WAS 10.00	12.56 WAS 12.50 ADDED COL. "T" ADDED 4.93 ADDED 7.00 ADDED 9.16 NOTE 1 WAS "T" CAP 02/01/06	ADDED M90 R34 WAS NITRILE
--------------------------------------------------------------------------------------	---------------------------------------------------------------------------------------------------------------------------	--------------------------------------------------------------------------------------------------------------------------	---------------------------------------------------------------------------------------------------------------	------------------------------

ECO 1394671 DUCTILE IRON A536 64-45-12 WAS CAST IRON A126 CLASS B C-USP2 WAS C-USP0 CAP 06/20/06

① ECO 1452594 ADDED MANUFACTURER'S OPTION ADDED NOTE 2 MCB 11/5/07

APPROVED
By CHAD POOLE at 6:08 pm, Nov 18, 2007

MUELLER CONFIDENTIAL
Title to and ownership of this engineering data remains in Mueller Co. No use is to be made of this data except as specifically authorized by Mueller Co. Assent on the part of recipients to these conditions is presumed.

DR BY: CAP	11/14/05	UNLESS OTHERWISE NOTED	THIRD ANGLE PROJECTION	C.B. NO.
CHKD: PSG	11/14/05	BREAK CAST CORNER(S)	⑧	
ENGR: RWV	11/14/05	BREAK WASH CORNER(S)	PURCH. NO.	PATT. NO.
MFR:		TOLERANCES	FINISH SCALE	
MFG:		UNLESS OTHERWISE NOTED	REF. NO.	NONE
TOOL:		LINEAR	ANGULAR	
FDY:		±	±	STR. NO.
NOTE				
MAT'L		DESCR.		NUMBER
US PIPE		4"-8" RWGV CUSP242②		U6714
VALVE		CUT-IN VALVE		