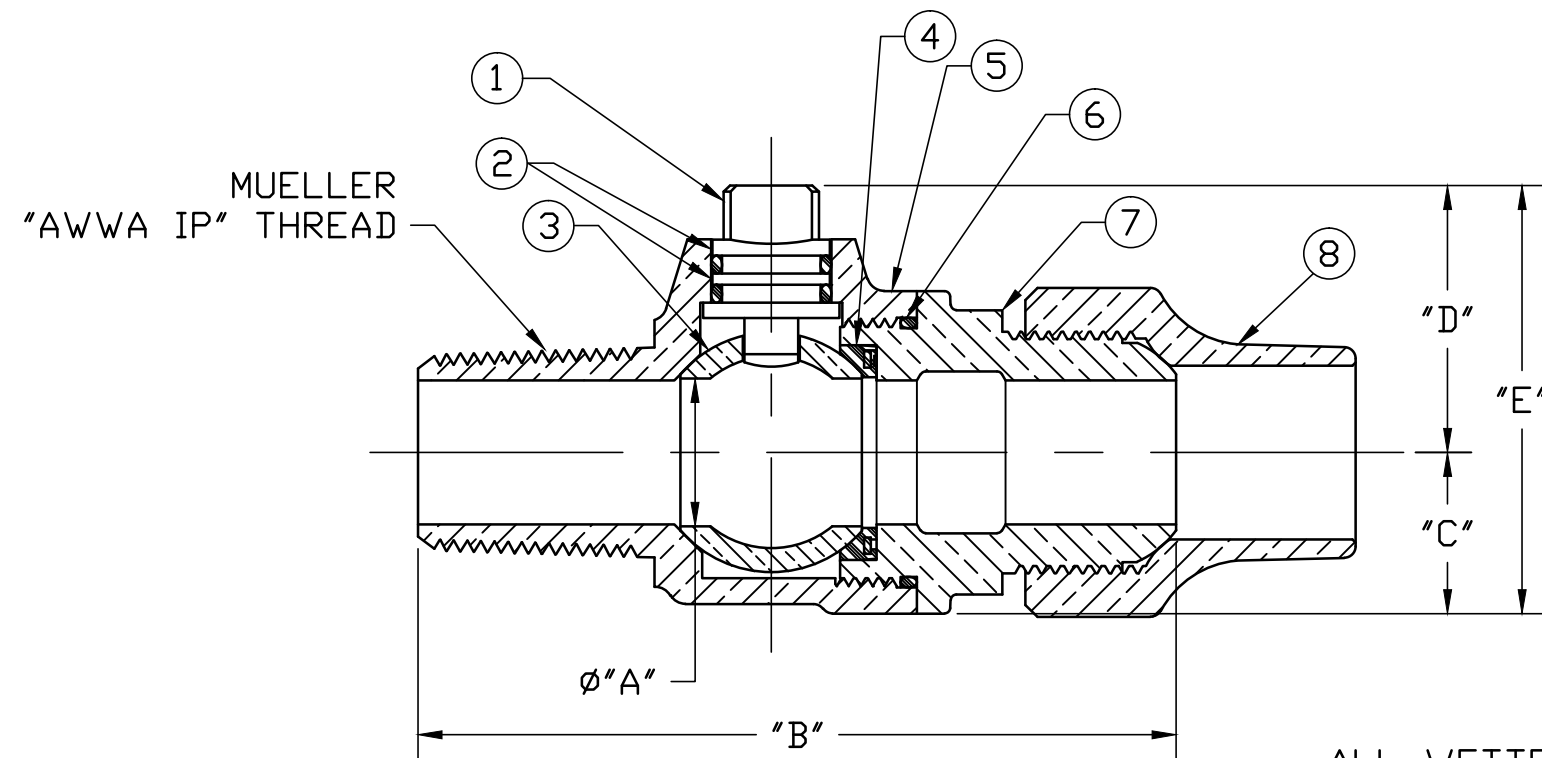


No.	DESCRIPTION	MATERIAL
1	STEM	CAST LOW LEAD BRASS ALLOY
2	O-RING	EPDM D2000
3	BALL	CAST LOW LEAD BRASS ALLOY
4	GASKET - SEAL	NITRILE D2000
5	BODY	CAST LOW LEAD BRASS ALLOY
6	O-RING	EPDM D2000
7	END PIECE	CAST LOW LEAD BRASS ALLOY
8	TUBE NUT	CAST BRASS ASTM B62 ALLOY C83600

SIZE	ØA	B	C	D	E
3/4	.75	3.95	.84	1.36	2.20
1	1.00	4.87	1.15	1.59	2.74
1-1/2	1.50	6.11	1.66	2.40	4.06
2	2.00	7.21	2.00	2.72	4.72



ALL WETTED PARTS ARE LOW LEAD BRASS ALLOY

FILEPATH: PROD-ENG\JJ\SUBMITTALS\E1929

						DRFTR	RWB	11/12/09	JONES
						CHKR			
						ENGR			
						MGR			
									UNLESS OTHERWISE NOTED
									THIRD ANGLE PROJECTION
									SURFACE PREPARATION:
									BREAK CORNER(S) ---- .000
									SURFACE FINISH -- 000 RMS
									TOLERANCE(S):
									LINEAR ----- ± .000
									ANGULAR ----- ± 0°00'
									REF. No.
									SCALE
									NONE
									STK No:
									MAT'L:
									DESCR.
									LLB CORPORATION BALL VALVE
									("AWWA IP" x CS)
									DWG NUMBER
									E1929

TITLE TO AND OWNERSHIP OF THIS ENGINEERING DATA REMAINS IN Mueller Co. NO USE IS TO BE MADE OF THIS DATA EXCEPT AS SPECIFICALLY AUTHORIZED BY Mueller Co. ASSENT ON THE PART OF THE RECIPIENT TO THESE CONDITIONS IS PRESUMED

REV	ECR	DESCRIPTION	DATE	BY	CHKR

PER EST NO: DXXXX EST FIN WT = 0.0000 lbs

DWG NUMBER
E1929
JJ-MRKTNG